

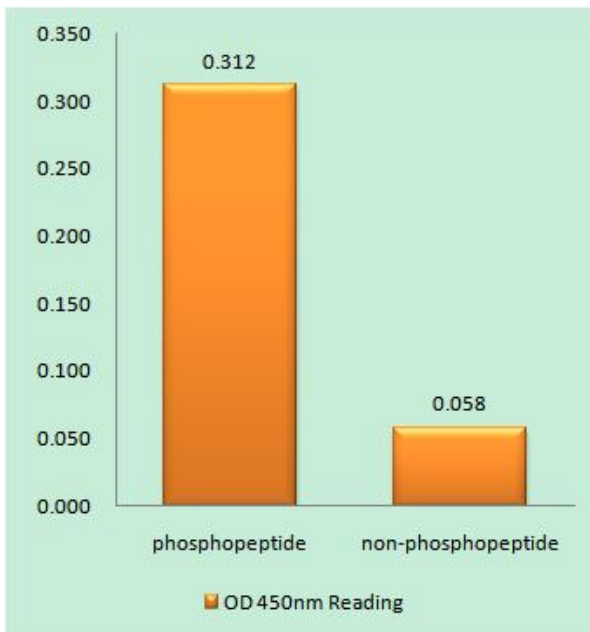


Rrn3 (phospho Ser649) Polyclonal Antibody

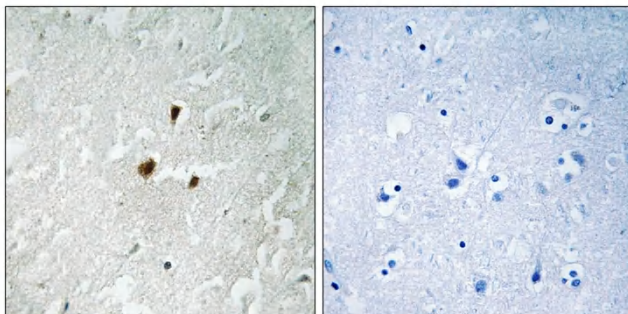
| | |
|----------------------------------|--|
| Catalog No | YP-Ab-01371 |
| Isotype | IgG |
| Reactivity | Human;Rat;Mouse; |
| Applications | WB;IHC;IF;ELISA |
| Gene Name | RRN3 |
| Protein Name | RNA polymerase I-specific transcription initiation factor RRN3 |
| Immunogen | The antiserum was produced against synthesized peptide derived from human TIF-IA around the phosphorylation site of Ser649. AA range:602-651 |
| Specificity | Phospho-Rrn3 (S649) Polyclonal Antibody detects endogenous levels of Rrn3 protein only when phosphorylated at S649. |
| Formulation | Liquid in PBS containing 50% glycerol, 0.5% BSA and 0.02% sodium azide. |
| Source | Polyclonal, Rabbit,IgG |
| Purification | The antibody was affinity-purified from rabbit antiserum by affinity-chromatography using epitope-specific immunogen. |
| Dilution | WB: 1/500 - 1/2000. IHC: 1/100 - 1/300. ELISA: 1/10000.. IF 1:50-200 |
| Concentration | 1 mg/ml |
| Purity | ≥90% |
| Storage Stability | -20°C/1 year |
| Synonyms | RRN3; TIFIA; RNA polymerase I-specific transcription initiation factor RRN3; Transcription initiation factor IA; TIF-IA |
| Observed Band | 70kD |
| Cell Pathway | Nucleus, nucleolus . |
| Tissue Specificity | Hippocampus,Kidney,Pooled,Spleen, |
| Function | function:Required for efficient transcription initiation by RNA polymerase I.,similarity:Belongs to the RRN3 family., |
| Background | function:Required for efficient transcription initiation by RNA polymerase I.,similarity:Belongs to the RRN3 family., |
| matters needing attention | Avoid repeated freezing and thawing! |
| Usage suggestions | This product can be used in immunological reaction related experiments. For more information, please consult technical personnel. |



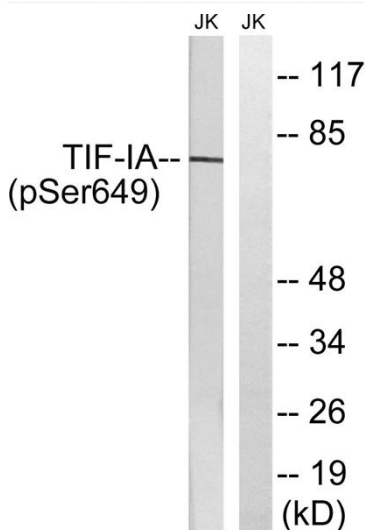
Products Images



Enzyme-Linked Immunosorbent Assay (Phospho-ELISA) for Immunogen Phosphopeptide (Phospho-left) and Non-Phosphopeptide (Phospho-right), using TIF-IA (Phospho-Ser649) Antibody



Immunohistochemistry analysis of paraffin-embedded human brain, using TIF-IA (Phospho-Ser649) Antibody. The picture on the right is blocked with the phospho peptide.



Western blot analysis of lysates from Jurkat cells treated with starved 24h, using TIF-IA (Phospho-Ser649) Antibody. The lane on the right is blocked with the phospho peptide.